



Amador Valley Industries

MULTI-FAMILY NEWSLETTER

July - September 2024

What is the Impact of Recycling Paper?

Sending paper to the landfill wastes natural resources, consumes landfill space, and creates greenhouse gas emissions.

Because paper is made from trees, it is considered organic matter. When organic matter breaks down in a landfill, it releases methane. Methane is a greenhouse gas that is much more potent than carbon dioxide.



If you don't recycle paper, start today!

Want to go beyond recycling? Try going paperless whenever possible. Preventing waste in the first place is the most environmentally sustainable option.

One way you can go paperless is by switching your property's garbage bill to paperless billing. If you don't want to miss out on receiving our newsletter with your bill, rest assured, our newsletters are available on our website at www.amadorvalleyindustries.com/newsletter/.

Paper Recycling Facts*

- Americans use 85 million tons of paper per year, which is about 680 pounds per person.
- Recycling one ton of paper saves 7,000 gallons of water and saves 3.3 cubic yards of landfill space.
- Each ton of recycled paper can save 17 mature trees.
- Approximately 1 billion trees worth of paper are thrown away every year in the U.S.



* Source: United State Energy Information Administration

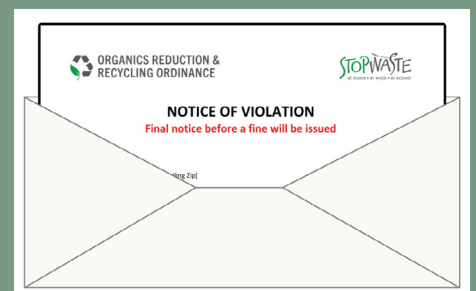
Violation/Citations Notices

Under SB 1383, multi-family properties are required to have compost and recycling service that is equally as accessible as garbage bins. Multi-family properties that do not have adequate recycling and compost collection services are subject to enforcement action and fines.

If you receive a Citation Letter, a fine is being assessed by StopWaste for not subscribing to adequate compost and recycling collection services after a warning (Notice of Violation) was sent.

You must increase service so that all of your tenants have access to compost and recycling.

Contact AVI today and we will help you create a plan to increase your service. To avoid future fines, complete the three steps by the due date listed in your citation letter. Visit StopWaste.org/rules-citations to complete the 3-step process.



Moving & Decluttering

Helping a tenant prepare to move in or out?

Wondering what to do with the piles of packing materials left behind?

What about the old chemicals and what-nots others have left behind, where do those go?

We often find ourselves unsure of how to get the useable materials into the hands of others who would appreciate it and at a loss for the tricky items that have been piling up in the garage, shed, or attic.

RE:Source provides guides and drop off locations for all the common items that need to be moved-on during these transitions. Visit resource.stopwaste.org/moving-decluttering for tips, drop off locations, and more. Simply click on the item you are looking to properly dispose of and update the zipcode at the search bar at the top of the page to find local drop off options.



Avoid Costly Plumbing Blockages by Encouraging Tenants to Compost

Costly plumbing blockages are created in multi-family buildings when tenants put food scraps down their garbage disposals. These blockages can affect the entire building, and cause issues for your tenants.

You can help prevent plumbing blockages by encouraging your tenants to compost.

Inform your residents that they can help the environment by choosing to compost, instead of putting their food scraps down the garbage disposal.

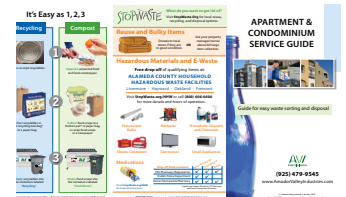


Food scraps contain a high amount of nitrogen. Since excess nitrogen is harmful to aquatic life, putting your food scraps down your garbage disposal can negatively impact our waterways.

Hard materials such as eggshells, fruit pits, and bones can damage garbage disposal units, further increasing maintenance costs at multi-family properties. Call AVI today for free assistance and resources, such as kitchen pails, to promote composting at your property.

Collection and Sorting Guides

Property managers / owners must educate tenants, employees, and contractors about SB 1383 composting and recycling sorting rules at least annually; and check containers periodically to ensure proper sorting.



Tenants must be informed of the rules no later than 14 days after move-in and at least 14 days before move-out.

Visit dublin.ca.gov/2669 for a Property Manager Waste and Recycle Toolkit compiled by the City of Dublin.

Interested in Learning More?



Mailing Address: PO Box 12617 Pleasanton, CA 94588
Customer Service Center: 6175 Southfront Rd. Livermore, CA 94551
Office Hours: Mon - Fri 8:00 AM to 5:00 PM
Phone: (925)-479-9545 - Fax: (925)-454-0782
Email Address: info@amadorvalleyindustries.com
Website: www.AmadorValleyIndustries.com

