

WORKPLACE RECYCLING

Why Recycle and Compost at Work?

- It's the law in California
- It can save you money
- It's good for our environment
- It's easy, hundreds of Dublin businesses already participate

Recycling and composting saves energy and reduces greenhouse gas emissions!

AVI Recycling and Composting Services

AVI offers three convenient collection services designed to meet your specific needs.

DISCOUNTED 1. MIXED RECYCLING

Recycle your paper, bottles, cans, cardboard in a single container.

DISCOUNTED 2. CARDBOARD ONLY RECYCLING

Recycling bulky cardboard is a great way to save valuable space in your trash bin.

DISCOUNTED 3. FOOD WASTE/ORGANICS COMPOST

Reduce garbage service by composting food scraps and other compostable materials.

Plastic rolling carts for Mixed Recycling and Compost available in 32, 64 and 96 gallon sizes

Metal dumpsters available in sizes ranging from 1 to 7 cubic yards



Start or Expand Your Recycling Program Today!

AVI also offers the following assistance and resources:

• Free Waste Assessment

To help you determine your organization's garbage, recycling, and compost service needs

• Free Set-up & On-going Support

To help keep your program running smoothly

• Free Resources

- Indoor recycling containers (supplies limited)
- Posters & instructional materials
- Window decal to let customers know you're doing your part



Free!

Available in various sizes and shapes



(925) 479-9545
recycle@amadorvalleyindustries.com
www.AmadorValleyIndustries.com

HAZARDOUS & TOXIC WASTES

DO NOT Include in Garbage or Recycling



No batteries



No appliances or electronics/eWaste

It is **ILLEGAL** to dispose of hazardous materials in your garbage or recycling containers.

Containers found to have these materials will not be collected until such materials are removed.



No fluorescent tubes or CFL light bulbs



No computers, monitors or TVs



No chemical cleaners, paints, solvents or other toxic chemicals

Proper Disposal of Hazardous & Toxic Wastes

Alameda County offers special programs for businesses generating small quantities of hazardous and/or universal waste. For more information, go to <https://www.stopwaste.org/at-work/business-hazardous-waste> or call **800-606-6606**

INFORMATION & RESOURCES

Check out **StopWaste.Org** for up-to-date information on these topics:

- Reuse & recycling – especially helpful for difficult to recycle items
- Purchasing environmentally preferable products
- Resource-efficient landscaping
- Green/environmentally responsible building practices
- Reusable transport packaging (www.usereusables.com)

Visit **www.StopWaste.Org**, or call the **Alameda County Recycling Hotline** at **(877) STOPWASTE (786-7927)**.

Special acknowledgment to StopWaste.Org, the City of Oakland, Castro Valley Sanitary District, and Contra Costa Sanitary District for the use of their recycling images. This project is funded by the City of Dublin.



(925) 479-9545
recycle@amadorvalleyindustries.com
www.AmadorValleyIndustries.com

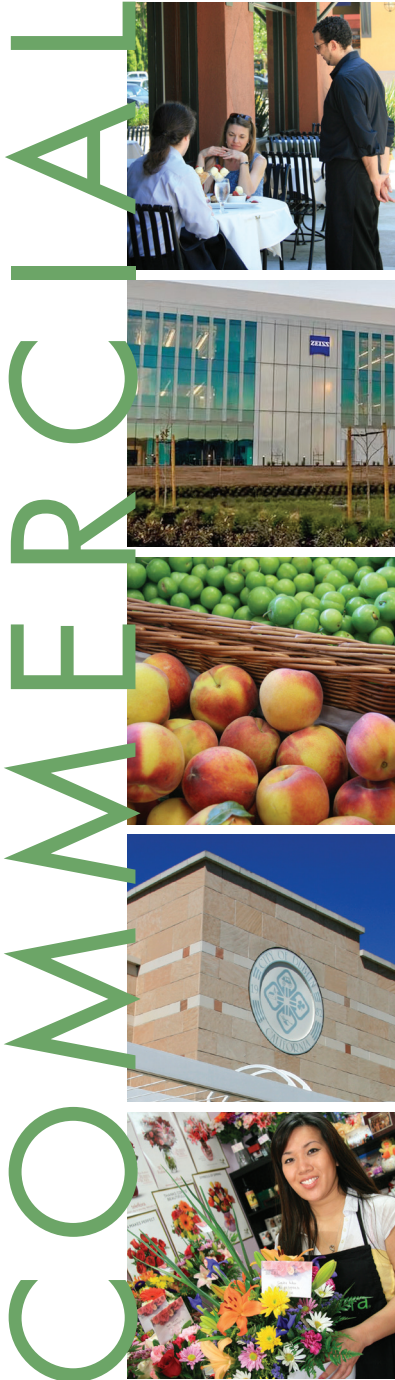
How-To-Guide

Compost, Recycling, & Garbage Collection Services

For the
City of Dublin



**Together,
we're
making a
difference!**



RECYCLE *It's easy, just put all your recyclables in the same container!*



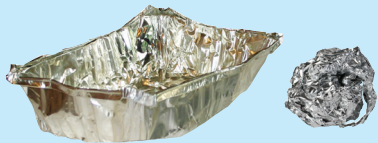
Put outdoor bin or cart in pickup area the night before your collection day



LOOSE items only in outdoor recycling containers, NOT IN PLASTIC BAGS!

For indoor use only

All clean & dry paper
Office papers, newspapers, magazines, catalogs, brochures, phone books, file folders, envelopes, carbonless forms, junk mail
Plastic envelope windows, staples, and paper clips are okay.



Aluminum foil & pans
Rinse first



Glass bottles & jars



Aluminum, steel & aerosol cans
Empty, non-toxics only

Restaurant oil jugs
Separate jug from box & flatten



Plastic bottles, jars & jugs
Container opening must be smaller than the base

FLATTEN ALL BOXES



Cardboard Only Recycling
Corrugated cardboard boxes, paper tubes & clean brown kraft paper

Keep these items out of the Recycle bin

Food or food-soiled paper or wrappers, paper towels, paper napkins or facial tissues, dirty or waxy paper, waxed cardboard, electronics, plants, broken ceramic dishware, diapers, plastic bags and flimsy plastic, batteries, sharps, rubber gloves, polystyrene foam, oils or liquids, building materials, paint cans

COMPOST



All food, including
cooked meat, bones, dairy, seafood, breads & grains



Wet & food-soiled paper, food scraps
Paper napkins & towels, paper food wrappers; paper bags, paper cups & plates. Coffee grounds & filters, tea bags, waxed cardboard

LOOSE items only
NO plastic, metal, glass, polystyrene foam, or liquids



Free food scraps containers provided!
(Supplies limited)



Waxed cardboard okay
FLATTEN ALL BOXES



Plant debris & clean, untreated wood
Branches/wood less than 4 ft. long & 4 in. thick

Keep these items out of the Compost bin

Plastics, plastic bags, BPI certified compostable bags, plastic-lined paper, milk cartons, treated wood, pet waste, diapers, batteries, sharps, cooking oil, electronics, hangers

LANDFILL

Bag items to avoid litter and stormwater pollution.



Non-Recyclable Plastics



Other



Pet Waste & Diapers



Plastic wrap, polystyrene foam

Keep these items out of the Landfill bin

Recyclables, food & food soiled paper, yard waste, batteries, electronics, syringes & sharps, hazardous waste