



Changes to Our Waste Stream



Remember the old days when we used to toss out what ever we wanted in an old tin garbage can? Remember the garbage truck would roll up in the morning and men would jump off the back of the truck and lift those heavy cans into the back of the truck and dump them? Things sure

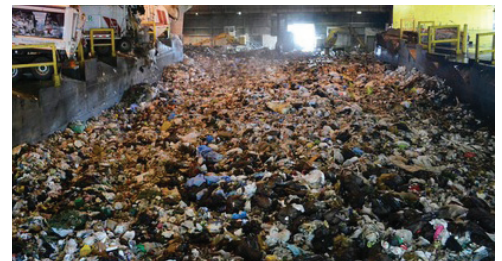
have changed since then. The waste/recycling industry has advanced productivity and technology steadily for decades. They developed the cart and automated truck system to save stress on their workers. Many companies concerned with their carbon footprint have changed their trucks to natural gas burning fuel. They created the separate cart system for recyclables to accomodate all the research and development into landfill reduction methods like compost (green carts), recycling (bluetop carts) and solid waste carts (blacktops). Now, in addition to the main 3 divisions of the waste stream, compost, recyclables and trash, a new division to the waste stream are toxic items such as: electronics, fluorescent tubes, sharps and household hazardous waste chemicals. These toxic items must not be put into the trash cart any longer

because we don't want to bury the dangerous chemicals they contain. To help you find out how and where to dispose of these items please contact StopWaste.org on the Web or call the Recycling Helpline: 1-877-STOPWASTE (786-7927).

Did you know...

The average person generates 4.3 pounds of waste per day. This is 1.6 pounds more than most produced back in 1960. Where does it all go? Approximately 55% of 220 million tons of waste generated each year in the United States ends up in one of the over 3,500 landfills. Municipal solid waste landfills are the second-largest source of human-related methane emissions in the United States, accounting for approximately 22 percent of these emissions in 2008 (EPA, 2011).

AVI appreciates your sorting efforts to help Dublin reach our recycling goal.



We Want Our Service to Be The Best and You Can Help

Please place your carts at the curb edge with at least 3 feet of clearance from other objects, including other carts, basketball hoops and motor vehicles.



What Do I Put Into the Organics Cart?

The reason Organics Carts are so important is that using them helps divert materials away from our landfills which is better for the environment. Here is a list to help you use your cart efficiently. Thank you for helping us provide you with the best possible service.

Organics Acceptable List

- Grass and weed clippings
- Shrubs and tree prunings (less than 4" in diameter)
- Leaves, plants and flowers
- Food scraps and food soiled paper products

Non-acceptable Organics List

- No household garbage
- **No plastic bags**
- No dirt or rocks
- No overloading - lid must be closed

Amador Valley Industries

Mailing Address P.O. Box 12617 Pleasanton, CA 94588 - Corporate Address 6175 Southfront Road, Livermore, CA 94551
Phone 925-479-9545 Fax 925-454-0782

StopWaste.org is a Great Wealth of Information



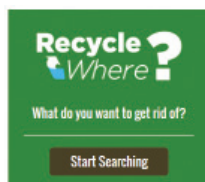
StopWaste.org has recently updated

their Website to make it easier to navigate and find out how to dispose of all types of waste, find brochures/guides, kits, reports/studies and many other helpful recycling materials.

Not all waste can be discarded in the normal waste stream anymore due to new laws and ordinances. For example, household batteries, fluorescent tubes, household cleaners and pesticides.

Recycling Wizard

One of StopWaste's valuable help tools is the "Recycle Where?" wizard.



Visit www.stopwaste.org to find the wizard and enter the item you

would like to recycle and the wizard will return a list of convenient locations to recycle your items.

Resource Library

Over many years recycling technologies, ideas and laws have grown. StopWaste has done extensive documentation for many

subjects and created a Resource Library of brochures, reports and studies to help residents, businesses and organizations keep up with all the up-to-date knowledge. Topics for better recycling and compliance range from residential dwellings, multifamily dwellings, office buildings, landscaping/gardens and construction.

For business, landscaping and construction owners there is a vast amount of documents outlining county ordinances that can help avoid a costly mistake in business practices. For example, there are many city and county "Building Green" and "Construction and Demolition Debris" ordinances that a business is required to comply.

The Resource Library is easy to navigate with "filters" to help get to the information you need. The library can be filtered by topic, type of document and location to save time getting to the materials that you need.

Recycling Posters and Helpful Resources

StopWaste has created many posters that can be printed and posted above your recycling containers with explanations of how to sort what goes into each container. These are helpful for homes and business locations.

Other resources can help educate and provide you with valuable information.

About StopWaste

StopWaste is a public agency responsible for reducing the waste stream in Alameda County.

They help local governments, businesses, schools and residents reduce waste through:

- Source reduction and recycling
- Market development
- Technical assistance
- Public education



They are governed jointly by three Boards, the Alameda County Waste Management Authority, the Alameda County Source Reduction and Recycling Board, and the Energy Council.

StopWaste Approach

StopWaste takes a comprehensive approach to stopping waste. Their work influences decisions made by people at every phase of the materials management cycle, from purchasing and consumption choices to what happens when products are discarded.

HELP TODAY'S FOOD SCRAPS BECOME THE SOIL OF TOMORROW.

FOOD SCRAP RECYCLING. MAKE IT SECOND NATURE.
WWW.STOPWASTE.ORG